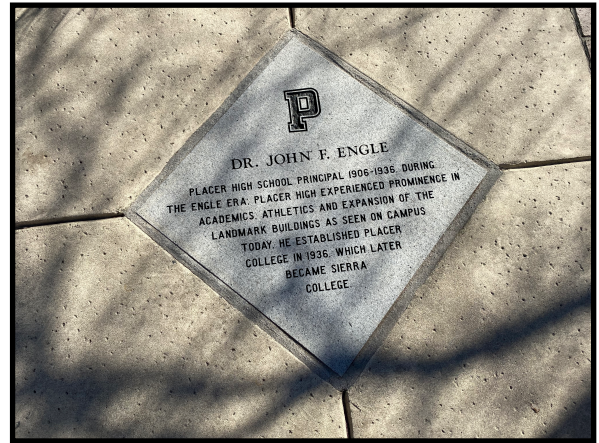
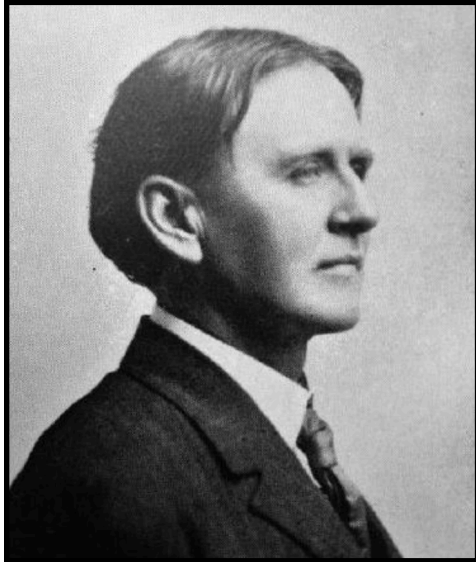


Dr. John Engle



Dr. John Engle
1863-1945

John Engle was the principal of Placer High School from 1906 to 1936. Under his leadership, the population of the school grew from 100 students to 830. He expanded the school site from one building to eight. He and State Senator Ernest Birdsall created the Placer Union High School District that now includes four comprehensive high schools, Placer, Del Oro, Colfax, Foresthill, and one alternative high school (Chana) and one independent high school (Maidu) and the Placer High Adult School. Engle was the force behind establishing Placer High as a northern California showcase for excellence in academics and athletics.

Nomination Application