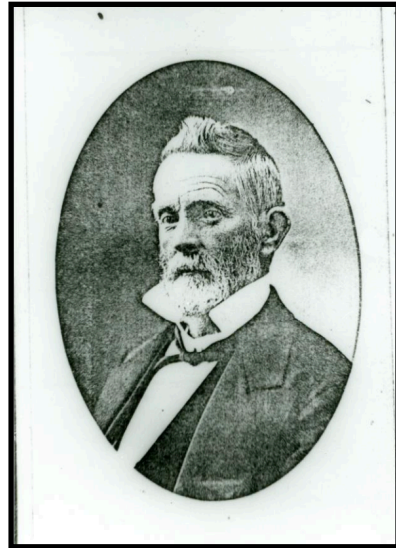
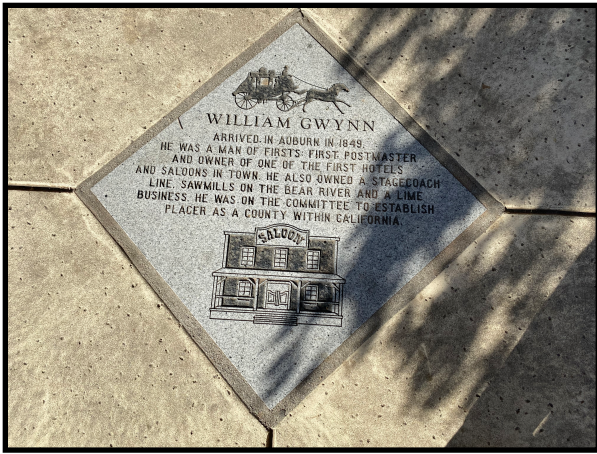


## William Gwynn



William Gwynn  
1822-1895

Gwynn was a 49er and one of the first to settle in Wood's Dry Diggings which would become Auburn. He ran a boarding house/saloon, was the first postmaster, he ran an early sawmill, helped build the first telegraph in California, he discovered the Alabaster Cave and was prominent in the lime business for many years. He was married to Cornelia Stow in 1860, they had five children. He was running a silver mine in Mexico when he died.

Findagrave.com, ancestry.com, Gwynn file at Archives.  
Photo courtesy of Placer County Museums